



Das Auto.

# The Caravelle and Multivan







## Long live the icon.

Splitty. Microbus. Kombi. Rye Bread. Hippie Van. Kleinbus. Westy. Bully. Barn Door. Breadloaf. Volksybus. Bay Window.

Over the last sixty years or so, the Volkswagen People Mover has had all sorts of nicknames from all sorts of cultures across the planet. Call it whatever you want, but there's little doubt that it has been loved the world over.

Movie star, generational symbol, peace icon and surf paragon. The Volkswagen People Mover has enriched the history of motoring by tapping into the psyche of millions of people. It conjures a spectrum of intense emotions and memories. It speaks of adventure, freedom, romance and shared family experiences. And the strength of the connection is as potent today as it has been at any time in Volkswagen's history.

The latest range of Volkswagen People Movers unites form and function as it always has. But these days, we need more. We need engines that perform brilliantly, are kinder to the environment and achieve superior fuel efficiencies. We need safety. We need comfort and clever storage space. And we need extras and options that adapt to our changing lifestyles.

Today's Volkswagen People Movers are modern icons that still carry Australian families on their quest for adventure and shared experiences. But they also cross over into the corporate world thanks to brilliant functionality, high end design, unmatched comfort and a badge on the front that is a universally recognised symbol of quality and reliability.



\* International model pictured with optional alloy wheels and colour coded bumpers.



## **Caravelle. The people mover that moves more people.**

When it comes to moving people and doing it in style, not much compares to Volkswagen Caravelle. With no less than 9 seats accessible through two huge sliding doors and generous luggage space in the rear, Caravelle can do it all.

Caravelle could be Mum's Taxi doing shopping trips and school drop offs. Or Caravelle could equally become a luxurious shuttle for an upmarket hotel transferring clients to city locations or the airport. Either way, Caravelle has the style, reliability and versatility to cope with any task.



\* International model pictured with optional alloy wheels and colour coded bumpers.



Just because there are 9 people on board doesn't mean that space has been compromised. Far from it. Passenger comfort in the rear is paramount with quality seats, generous legroom and rear air conditioning control panels. The versatile seat configuration in the passenger cabin allows for a variety of combinations with the seven seat structure. And you can take one or all of the rows out to create a huge flat space giving you even more room for larger luggage items. As you would expect, safety is criti-

cal. Caravelle includes a suite of active and passive safety features to protect its occupants including Electronic Stabilisation Programme (ESP), Anti-lock Braking System (ABS) and Electronic Differential Lock (EDL) as standard.

Up front, the Caravelle's advanced 103 TDI engine offers a blend of power and torque to 340Nm, with outstanding fuel efficiency of just 8.2l /100km. This responsive engine is paired to a smooth 7-speed DSG transmission. Coupled with

a truly ergonomic driving environment, it all adds up to make getting around urban environments or the open road a pleasure.

Perfect for larger families looking for versatility and safety. Perfect for shuttle bus operators and hotels looking for quality and performance. Caravelle fits the bill in so many ways.



**Multivan.  
Moving people in style.**



Volkswagen Multivan is a triumph of design. These elegant people movers are the product of considerable fine tuning over several decades to yield an intelligent vehicle that moves people and their luggage in superior comfort.

With a svelte new front end and a sporty, agile profile, the Multivan is more than a pretty face. It's also a pretty space inside with a luxurious passenger interior that takes full advantage of smart German thinking. The Multivan cabin offers a wealth of versatile space for seven people with the climate controlled by a 3-zone climatronic air conditioning unit. In the

rear, the second row seats would be right at home in your lounge room. Spin them through 180 degrees and you effectively create a meeting room like no other. We have catered for comfort in our front seats with adjustable armrests and lumbar support and the option of a practical, beautifully designed multi-functional table (standard in Highline). The table not only pivots to suit the needs of passengers, it also contains several cup-holders and includes handy storage compartments.

Up front, the driver enjoys brilliant handling from highly responsive, efficient

engines and transmissions. It's the ultimate control centre – ergonomically designed with a wide range of state-of-the-art instrumentation. Safety features span the vehicle including driver and front passenger side and curtain airbags, curtain airbags for the rear, Anti-lock Brakes (ABS), Anti-Slip Regulation (ASR), Electronic Stabilisation Programme (ESP) and much more.

Multivan. It's the people mover that has moved up in the world.



## Multivan Comfortline.



Multivan Comfortline lives up to its name. The versatile cabin provides for a myriad of combinations depending on how many people are on board and what you're carrying. The secret to this versatility is the ingenious in-floor rail system that allows you to configure the rear of the Multivan to suit your needs. The rails allow for endless seat adjustability – it's a very straightforward system to use and so handy when you need to make adjustments on the fly.

Picking up some friends from the airport? Simple – and there's plenty of space for luggage and duty free too. Need to get a few extra mates home from a party? No problem. Heading off on holiday and packing extra gear for the beach? Move a couple of seats around and there's plenty of space to stow tents, eskies and surf-craft. On board comfort is well catered for from the three-zone climate control air conditioning, window blinds, eight speaker audio system right down to the

variety of trays and cup holders to keep everything stowed away and handy.

And Comfortline is perfect for getting families around town. There is a flexible seating arrangement keeping everyone happy thanks to the centre walk through between the driver and passenger seats (sure beats standing in the rain) giving you quick access to the second row and third row in the back.

# Multivan Highline.

Welcome to the top end of the Volkswagen People Mover range. Highline combines luxurious appointments with practicality and versatility that is the hallmark of the whole range.

Inside, you will ease into the comfortable leather captains chairs which swivel 180 degrees in the second row to create a mobile lounge room. Slip the multifunction table along the interior rail system and you've got the perfect social and business environment. Entry to this interior is even easier with Highline thanks to smart button-operated (electric) sliding rear doors. Overhead in the rear cabin, a stylish bank of lights and air vents provide fresh air and services to passengers on demand.

The Highline is a true performance machine which draws on a wonderfully efficient TDI engine offering 132kW of power. The smooth 7-speed DSG transmission makes driving Multivan Highline an absolute pleasure. And if you need some extra grip for difficult on-road conditions or towing, there's always the option of Volkswagen's ingenious 4MOTION DSG system.

Luxury, practicality, standout design and brilliant performance. Multivan Highline has it all.





## Safety.

The most important attribute of any Volkswagen people mover is safety – as you would expect given that the most important cargo is people. If you were to strip away the sleek panels, the instrumentation, and the beautifully finished interior, you would see the rigid construction that lies just beneath the surface. Meticulous German engineering gives this framework incredible strength to shield occupants. With safety equipment such as multiple airbags, ABS with EDL, ASR, EBD and ESP with Brake Assist, the environment in the people mover range is not just comfortable - it's also protective. There are levels of safety for those beyond the cabin – for instance the standard inclusion of Rear View Camera on Multivan Highline, which provides the driver with a clear understanding of what, and who, is directly behind the vehicle for safe reversing. And subtle lighting ideas and sensing technologies add to the passive system of the people mover range – for instance, turning lights can help to illuminate blind curves and intersections, and features like “Side Assist” make changing lanes in heavy traffic a breeze. No stone is left unturned to make our range of people movers the benchmark in safety.

# EBD

**Electronic Brakeforce Distribution (EBD)** prevents lock-up of the rear wheels when the vehicle weight is transferred to the front wheels under heavy braking.

C  MC  MH



The seat belt warning reminds the driver that their seat belt is not fastened.

C  MC  MH



The **Electronic Stabilisation Programme (ESP)**, including hill holder, prevents the vehicle from swerving in critical driving conditions.



The **Anti-lock Braking System (ABS)** prevents wheels from locking up and improves manoeuvrability.

C  MC  MH



The **Brake Assist System** recognises the speed at which the brake pedal is pushed. Under reflex or emergency braking, the system senses the urgent need and applies full brake pressure more rapidly.

C  MC  MH

C  MC  MH

standard  MC Multivan Comfortline  C Caravelle

optional extra  MH Multivan Highline

## 4MOTION.

The addition of 4MOTION will provide your Volkswagen people mover with sure footed agility in the most trying of surface conditions and can take you further off the beaten track. 4MOTION is as simple as it is effective – at its heart is a unique Haldex system that anticipates slip, rather than reacting to it once the tyres lose traction. The system draws data from a range of sensory inputs on the running gear. This data is delivered immediately into an electronically controlled clutch which constantly calculates load requirements and pushes drive between the front and rear wheels with a wide range of variability according to surface conditions and driving forces. 4MOTION excels on bitumen roads and comes into its own on open terrain, providing the tangible benefits of all-wheel drive.



**Wading depth:** up to 300mm. With the Multivan, you can cross deep puddles and shallow water with the greatest of ease and safety. Should roads be flooded after heavy rainfall, this presents no difficulty. Measured at a full load and at a maximum speed of 30km/h.



**Departure angle:** 17°, approach angle: 21°. Short inclines are no problem for the Multivan. Thanks to the wheel-base, the bumpers don't make contact with the ground even at an approach angle of 21°. Measured with standard equipment and full load.



**Ramp angle:** 14°. The greater the ground clearance, the more freedom you'll have on your adventures. The Multivan can even cope with crests with a ramp angle of 14° without difficulty. Measured with standard equipment and full load.



**Hill-climbing ability:** 37°. The Multivan can master tarmac passes, medium slopes and steep inclines with ease up to a slope of 37° with the 132kW engine\* and a vehicle weight of 3,000kg.

\* Figures may vary depending on the equipment line and engine type. Please note that these are statically calculated figures. Please contact your local Volkswagen dealer for details of the standard equipment and optional extras applicable.

## Accessories.

Life is about choices. And choices are what makes Volkswagen people movers so essential for many lives. Quite apart from the functionality, versatility, engineering, clever design and driving pleasure of the Volkswagen people mover range, there is a range of useful accessories that add considerable value to your people mover and make your life all the more enjoyable.



**Roof Bar Set and Kayak Holder.** The roof bar set with kayak holder makes transporting a kayak simpler than ever. Straps wrap over both ends to secure the kayak in place on the roof bars. Easy!



**Roof Bar Set and Ski snowboard holder.** The roof bar set with ski and snowboard holder is perfect for transporting your gear. The holder locks both skis and snowboards securely in place, so you are free to fill up your boot with everything else you need for the trip.



**Boot mat.** This luxurious carpet boot mat offers excellent protection from dirt, sand, dust and wear and tear. It fits neatly inside the boot and can be removed quickly for easy cleaning.



**Luggage net.** Life is full of small items to carry here and there. Not to mention longer trips away. Secure it all with this useful luggage net that hooks easily onto the boot eyelets.



**MEDIA-IN and connector cables.** Allows you to connect external audio sources including USB, USB mini, 3.5mm jack and iPod. Plays your favourite tracks through the vehicles audio system.



**RNS510 Satellite Navigation System** is Volkswagen's state-of-the-art innovation, with a touch sensitive display for easy operation. High-res 16.9 screen and high performance processor, this system will calculate your travel routes at incredible speeds.



**Bluetooth Phone Kit.** Negotiating around busy roads and taking calls on the fly is now much easier thanks to this handy Bluetooth Touch Phone kit. Pairs quickly with all major phones and installs neatly on the dash.



Images are for illustration purposes only. Overseas specification vehicles are shown. Bicycle, kayak, skis and snowboard not available for purchase from Volkswagen or its dealers.



**Mud flaps.** Designed to fit snugly, these mud flaps cut the road grime and minimise spray from wet road driving. They also offer additional body protection.



**Rear boot trim – Chrome.** Shaped to fit the curvature of the boot, this rear boot trim comes in chrome and complements the appearance of the vehicle perfectly.



**Slimline Weather Shields.** These slimline weather shields complement the shape of your windows and can be fitted to driver and passenger doors, allowing you to have the windows part way down when it rains.



**Boot Sill Protector.** This boot sill protector is shaped to fit the curvature of the boot to shield against scratches during standard loading and unloading.



**Textile floor mats.** These textile floor mats look great with the interior and do an excellent job of protecting your floor from dirt, mud, dust and wear and tear.



**Towbar.** For times when you need to carry more or do want to tow a trailer, these genuine towbars have a 2000kg braked towing capacity and 750kg unbraked with a 100kg downball weight.



**17" Suez Alloy Wheel.** This alloy wheel will give your People Mover that extra class.



**18" Dakar Alloy Wheel – Silver.** This alloy wheel is designed to be robust and elegant.



**18" Dakar Alloy Wheel – Black.** This alloy wheel will complement the sleek design of your People Mover.

## Amazing engines.

The Volkswagen range of people movers is powered by some brilliantly designed TDI engines.

The latest generation of TDI engines have an excellent reputation for their high torque and superior levels of efficiency. These engines have been specially designed with the driver and the environment in mind and boast improved fuel consumption and CO<sub>2</sub>

emissions. The experience behind the wheel is smooth and pleasurable with seamless gear changes thanks to the silky 7-speed DSG transmission. And for those looking at additional grip off the road, there's always the option of 4MOTION all-wheel drive.

Caravelle models feature a turbocharged 2.0 litre 103kW power train generating up to 340Nm of torque – that's plenty of

power to move lots of people and luggage. This Euro 5 compliant engine is available in Multivan, but Multivan customers also have the choice of stepping up to a high performance 132kW TDI twin turbocharged engine.

If you're looking for extra power but don't wish to sacrifice fuel efficiencies along the way, then this is one incredible engine to have under the bonnet of your Multivan.

## Engine specifications.

Engine	Caravelle	Multivan	
	103kW TDI	103kW TDI	132kW TDI
Type	4 Cylinders, DOHC, 16 Valve	4 Cylinders, DOHC, 16 Valve	4 Cylinders, DOHC, 16 Valve
Installation	Transverse installation	Transverse installation	Transverse installation
Construction materials	All alloy	All alloy	All alloy
Capacity, litres/cc	2.0 / 1,968	2.0 / 1,968	2.0 / 1,968
Bore x Stroke / Compression ratio	81.0mm x 95.5mm / 16.5:1	81.0mm x 95.5mm / 16.5:1	81.0mm x 95.5mm / 16.5:1
Maximum power, kW @ rpm	103 @ 3,500	103 @ 3,500	132 @ 4,000
Maximum torque, Nm @ rpm	340 @ 1,750-2,500	340 @ 1,750-2,500	400 @ 1,500-2,000
Fuel system	Common Rail Direct Injection	Common Rail Direct Injection	Common Rail Direct Injection
Induction type	Single-turbocharger	Single-turbocharger	Twin-turbochargers
Intercooled	Yes	Yes	Yes
Emissions standard	Euro 5* with Diesel Particulate Filter (DPF)	Euro 5* with Diesel Particulate Filter (DPF)	Euro 5* with Diesel Particulate Filter (DPF)
Fuel type	Diesel	Diesel	Diesel
Fuel tank capacity	80 litres	80 litres	80 litres
<b>Transmission</b>			
Transmission – automatic	7 Speed DSG	7 Speed DSG	7 Speed DSG
Driven wheels	Front wheel drive	Front wheel drive	Front wheel drive/ Optional 4MOTION
<b>Wheels and Tyres</b>			
Wheels	Steel 6.5J x 16 (with Cover)	Alloy 6.5J x 16 "Cartagena"	Alloy 7J x 17 "Neva"
Tyres	215 / 65 R16 C 106/104T	215 / 65 R16 102/100H	235 / 55 R17 103W
<b>Fuel Consumption – ADR81/02</b>			
Automatic, Litre/100km CO <sub>2</sub>	8.2 / 10.4 / 6.9 216g/km	8.2 / 10.4 / 6.9 216g/km	8.1 / 10.2 / 6.9 214 g/km
4MOTION DSG, Litre/100km CO <sub>2</sub>	–	–	8.8 / 11.1 / 7.5 232 g/km

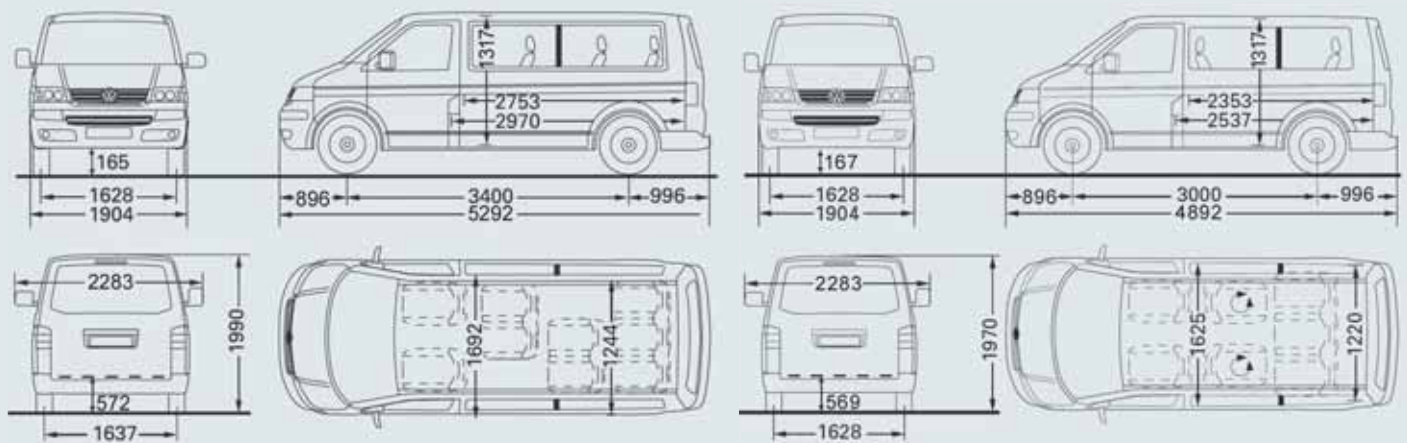
\* Emission level according to European Regulation (EC) No. 715/2007 and Regulation (EC) No. 692/2008. The information and the specifications contained within this document were correct at the time of issue. Due to our continuous process of improvement our products are continually updated and changes may be made to the specifications from time to time. Not all vehicles or options may be available. Check at time of ordering.

## Dimensions.

Dimensions	Caravelle	Multivan
Length, mm	5,292	4,892
Width, mm	1,904	1,904
Width, including door mirrors, mm	2,283	2,283
Height, mm	1,990	1,970
Wheelbase, mm	3,400	3,000
Grand clearance	165	165
<b>Interior Dimensions (Passenger area)</b>		
Maximum length, mm	2,970	2,537
Maximum width, mm	1,692	1,625
Maximum height, mm	1,317	1,317
<b>Warranty</b>		
Vehicle	3 Years, Unlimited km	3 Years, Unlimited km
Paint / Corrosion	3 Years / 12 Years	3 Years / 12 Years
Road side assistance	3 Years, Unlimited km	3 Years, Unlimited km

## Weights.

Weights	Caravelle	Multivan	
	103kW TDI	103kW TDI	132kW TDI
Towing capacity, braked / unbraked	2,000kg / 750kg	2,000kg / 750kg	2,000kg / 750kg
Towing downball load	100kg	100kg	100kg
Tare weight (includes driver)	2,053kg	2,241kg	2,375kg



Caravelle

Multivan

## Standard specifications.

Safety and Security	Caravelle	Multivan Comfortline	Multivan Highline
Driver and front passenger airbag	S	S	S
Curtain airbags – passenger area	–	S	S
Daytime Running Lights	S	S	S
Rigid safety cell with front and rear crumple zones	S	S	S
Electronic engine immobiliser	S	S	S
Anti-lock Braking System (ABS)	S	S	S
Brake Assist (BA)	S	S	S
Anti-Slip Regulation (ASR)	S	S	S
Electronic Differential Lock – front (EDL)	S	S	S
Hill Holder	S	S	S
Rear fog lamp	S	S	S
Remote central locking with 2 remote keys	S	S	S
Automatic locking after take off (programmable)	S	S	S
Child seat anchor points mounted on back of 2nd row bench	S	S	S
Child seat anchor points mounted on back of 2nd row bench and 3rd row seats	–	S	S
Front height adjustable 3 point seat belts with pre-tensioners	S	S	S
3 Point Seat belts for all passengers	S	S	S
Electronic Stabilisation Programme (ESP)	S	S	S
Rear window with wash/wipe and intermittent wipe	S	S	S
Roof rails for movable roof rack	O	S	S
Electrical child safety locks on rear doors	–	S	S
<b>Exterior</b>			
Electrical adjustable door mirrors with heating function	S	S	S
Front and rear mud flaps	S	S	S
Dual sliding doors	S	S	S
Full size steel spare wheel	S	–	–
Full size alloy spare wheel (not with 18" wheels)	–	S	S
Halogen twin headlights with polycarbonate casing	–	S	S
<b>Interior</b>			
Seat layout, 2/2/2/3	S	–	–
Front row – Driver and front passenger seats with height/lumbar adjustment and armrests	S	–	–
Second row – 2 seater removable bench with armrest and child seat anchor points	S	–	–
Third row – 2 seater removable bench with armrest	S	–	–
Fourth row – 3 seater removable bench	S	–	–
Seat layout, 2/2/3	–	S	S
Front row – 2 comfort seats with height and lumbar adjustment and adjustable armrests	–	S	S
Second row – 2 removable swivel seats with armrests and storage drawers. Mounted on rails to allow longitudinal adjustment	–	S	S
Third row – 3 seater bench, removable and reclining. Mounted on rails to allow longitudinal adjustment	–	S	S
2 Cup holders and 2 x 1.5 litre bottle holders	S	–	–
4 Cup holders and 3 x 1.5 litre bottle holders	–	S	–
8 Cup holders and 3 x 1.5 litre bottle holders	–	–	S
Power front windows, with roll-back function	S	S	S
Driver and passenger window with one-touch up/down	S	S	S
Height and reach adjustable steering wheel	S	S	S
2 Zone “climatic” air conditioning with front and rear controls	S	–	–
3 Zone climate control air conditioning	–	S	S

## Standard specifications.

Interior (continued)	Caravelle	Multivan Comfortline	Multivan Highline
Retractable sun blinds in passenger area	S	S	S
Rear roof lighting with ventilation, climate control and reading lights	S	S	S
Seats with cloth trim	S	S	–
Seats with leather trim	–	–	S
Chrome plated load restraining hooks	–	S	S
8 Speakers	–	S	S
Luggage compartment light	–	S	S
Leather trimmed gearshift knob and boot	–	S	S
Sliding side windows in passenger compartment	–	S	S
Sliding side windows front and fixed rear in passenger compartment	S	–	–
Luggage cover	–	S	S
6 Passenger assist grips with damper	–	S	S
7 Passenger assist grips, 2 “A” and 2 “C” pillar handles	S	–	–
Vanity mirrors in sunvisor	S	S	S
Seat heater for front seats	–	–	S
12V sockets in the front and passenger compartment	S	–	–
12V sockets in the front, middle and rear	–	S	S
<b>Convenience</b>			
Dual side sliding doors	S	S	S
Automatic dimming rear-view mirror	–	S	S
<b>Instrumentation</b>			
Multi-function trip computer	S	S	S
Speedometer and tachometer, electronic odometer and trip meter, digital clock, fuel and coolant indicators, low fuel warning light, outside temperature and fuel gauge.	S	S	S

S = Standard – = Not Available O = Optional

## Suspension and brakes specifications.

Suspension & Steering	Caravelle	Multivan	
	103kW TDI	Comfortline 103kW TDI	Comfortline / Highline 132kW TDI
Front axle	Independent McPherson struts, sub frame with coil springs and gas filled dampers	Independent McPherson struts, sub frame with coil springs and gas filled dampers	Independent McPherson struts, sub frame with coil springs and gas filled dampers
Rear axle	Semi trailing independant rear axle with coil springs and anti roll bar	Semi trailing independant rear axle with coil springs and anti roll bar	Semi trailing independant rear axle with coil springs and anti roll bar
Steering	Rack and pinion power steering “serrotronic” on Highline	Rack and pinion power steering “serrotronic” on Highline	Rack and pinion power steering “serrotronic” on Highline
Turning Circle	11.9m servotronic	11.9m servotronic	11.9m servotronic
<b>Brakes</b>			
Front Disc brakes	305mm	308mm	340mm
Rear Disc brakes	294mm	294mm	294mm
Brake systems	ESP, ABS, ASR, MSR, EDL and Hill Holder	ESP, ABS, ASR, MSR, EDL and Hill Holder	ESP, ABS, ASR, MSR, EDL and Hill Holder

The information and the specifications contained within this document were correct at the time of issue. Due to our continuous process of improvement our products are continually updated and changes may be made to the specifications from time to time. Not all vehicles or options may be available. Check at time of ordering.

## Factory options.

	Caravelle	Multivan Comfortline	Multivan Highline
<b>Safety and Security</b>			
Driver and front passenger head/thorax airbags	O	S	S
Front fog lights with cornering function	O	O	S
Light and Sight package – includes Dusk sensing headlights with ‘coming home’ function, rain sensing wipers and auto dimming rear view mirror	O	O	S
Rear parking sensors with acoustic warning	O	–	–
Front and rear parking sensors with acoustic warning	O	S	S
Alarm with internal monitoring	O	S	S
<b>Driver Assistance Systems</b>			
Side Assist (SWB Vehicles only)	–	O	O
Rear View Camera (RVC Plus) – only with RNS510	O	O	S
<b>Exterior</b>			
Metallic paint	O	O	O
Pearl effect paint	O	O	O
Body coloured bumpers	O	–	–
Body coloured bumpers and side moulding strips	–	S	S
Body coloured bumpers door handle and outer rear view mirror covers	–	S	S
Body coloured exterior rear view mirror covers	O	–	–
Dark tinted windows in passenger compartment	O	O	S
16” x 6.5J Alloy wheels “Cartagena”	O	S	–
17” x 7J Alloy wheel “Neva” with 235 / 55 R17 103W tyres	–	S (132kW only)	S
18” x 8.0J Alloy wheels “Canberra” with 255 / 45 R18 103W tyres (only with sport suspension)	–	–	O
Electric sunroof	O	O	O
Electric folding door mirrors	–	O	O
<b>Interior</b>			
RCD210 CD/Radio with MP3 Single Din and 4 Speakers	S	–	–
RCD310 CD/Radio with MP3 Double Din with Aux-In	O	–	–
RCD310 CD/Radio with MP3/RDS and Aux-in + 8 speakers	–	S	–
RNS510 Satellite Navigation/CD/Radio with 30GB HDD/MP3/RDS/Aux-in and monochrome multifunction display with RVC Plus + 8 speakers	O	O	S
Leather steering wheel with multifunction controls	O	O	S
3-Spoke leather trimmed steering wheel	–	S	–
Central armrest in 3 seater bench seat	–	–	S
Step inserts in foot well – with Multivan lettering	–	S	–
Step inserts in foot well – with Highline lettering chrome	–	–	S
Chrome rear sill plate and coat hook	–	–	S
Good night package – includes window blinds, waste bin and drawers in 3-seater bench	–	O	O
Cooling/warming box (32 litre) including second battery	–	O	O
<b>Convenience</b>			
Cruise control	O	S	S
Dual power sliding doors with remote operation	O	O	S

S = Standard – = Not Available O = Optional

The information and the specifications contained within this document were correct at the time of issue. Due to our continuous process of improvement our products are continually updated and changes may be made to the specifications from time to time. Not all vehicles or options may be available. Check at time of ordering.

## Caravelle paint colours.



Sunny Yellow  
Solid paint  
M9M9



Candy White  
Solid paint  
B4B4



Salsa Red  
Solid paint  
4Y4Y



Reflex Silver  
Metallic paint\*  
8E8E



Olympic Blue  
Metallic paint\*  
S6S6



Fresco Green  
Metallic paint\*  
3P3P



Natural Grey  
Metallic paint\*  
M4M4



Sand Beige  
Metallic paint\*  
P8P8



Toffee Brown  
Metallic paint\*  
Q4Q4



Night Blue  
Metallic paint\*  
Z2Z2



\* Metallic and pearl effect paint are available at extra cost. The illustrations on these pages can only be regarded as a general guide as the printing process cannot render the colours with absolute accuracy. Please contact your local Volkswagen dealer for details of the standard equipment and optional extras available.

standard

Caravelle

optional extra

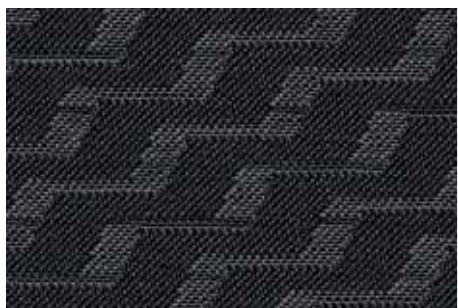
## Caravelle paint colours.



Deep Black  
Pearl effect paint\*  
2T2T

C

## Caravelle trim.



Tasamo Anthracite  
Cloth  
RE

C

## Multivan paint colours.



Candy White  
Solid paint  
B4B4

MC MH



Salsa Red  
Solid paint  
4Y4Y

MC MH



Night Blue  
Metallic paint\*  
Z2Z2

MC MH



Natural Grey  
Metallic paint\*  
M4M4

MC MH



Fresco Green  
Metallic paint\*  
3P3P

MC MH



Reflex Silver  
Metallic paint\*  
8E8E

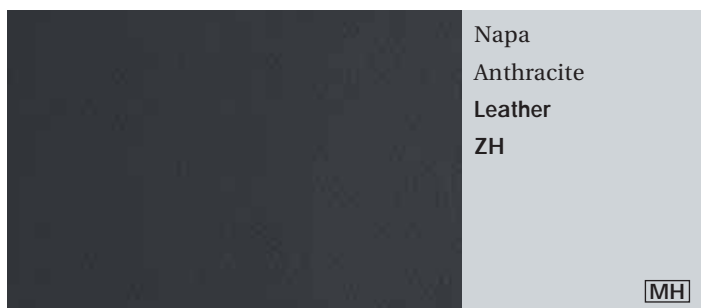
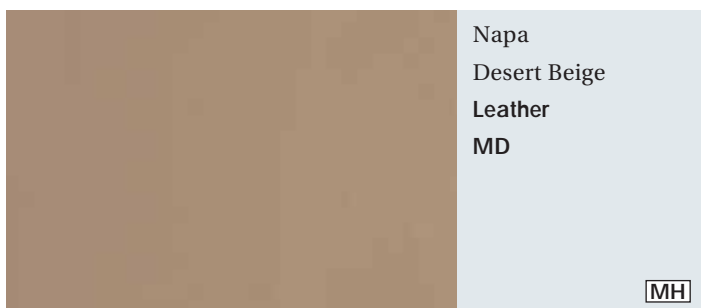
MC MH

\* Metallic and pearl effect paint are available at extra cost. The illustrations on these pages can only be regarded as a general guide as the printing process cannot render the colours with absolute accuracy. Please contact your local Volkswagen dealer for details of the standard equipment and optional extras available.

## Multivan paint colours.



## Multivan trim.



standard  
 optional extra

**MC** Multivan Comfortline  
**MH** Multivan Highline

**C** Caravelle

## Owning a Volkswagen.

### Volkswagen New Vehicle Warranty

Volkswagen Caravelle and Multivan are covered by a 3-year/unlimited kilometre manufacturer's warranty, which includes Volkswagen Assist (24hr roadside assistance). People Movers are also covered by a 3-year paintwork and 12-year anti-corrosion perforation warranty.

### Volkswagen Assist 24 hour roadside assistance

As a valued customer, you can be assured that, wherever you travel within Australia, you will have access to roadside assistance, 24 hours a day, 365 days a year. This is complimentary for the duration of the vehicle's original Volkswagen warranty period. You will receive help in the event of a breakdown or accident and, if required, your vehicle

will be mobilised or transported to an Authorised Volkswagen Repair Centre.

### Volkswagen Extended Warranty

Why not continue the confidence of a Volkswagen Warranty by purchasing a Volkswagen Extended Warranty? For further details on this option, please contact your local Volkswagen Dealer.

### Volkswagen Service

Your Authorised Volkswagen Service Centre is part of Volkswagen's global Quality Management System, ensuring all dealers are certified to ISO 9001:2000 – an internationally recognised Quality Standard. Authorised Volkswagen Service Centres have factory trained technicians equipped with the very latest diagnostic equipment, specialist tooling and

Volkswagen Genuine Parts. An Authorised Volkswagen Service Centre undertakes work in accordance with factory specified guidelines and maintenance schedules.

### Volkswagen Genuine Parts®

Volkswagen Genuine Parts® are designed for your vehicle and approved by Volkswagen, with particular regard to safety. The workmanship, dimensional accuracy and materials used in these parts comply with factory specifications. To ensure safety and reliability, Volkswagen recommends the use of Volkswagen Genuine Parts®. Volkswagen Authorised Dealers offer a 2-year warranty on Genuine Parts from the date of purchase.

## Environment.

At Volkswagen, we don't see the word 'Environment' as a barrier. We believe that sound environmental sustainability offers the opportunity to develop long-term innovations, including new approaches, efficient technologies and ground-breaking products. An internal Environment Committee was established in order to manage our business activities from an environmental point of view and to find solutions to reduce our environmental impact.

As a first and important step, Volkswagen Group Australia have developed a Carbon Management Strategy helping us to identify and manage our carbon emissions from our business activities. This has led to a Carbon Management Program

throughout the organisation, empowered to recommend changes that mean real emissions reductions. From reduced electricity consumption to optimised business flights, we're making changes to reduce our carbon footprint.

On a local level, we have also undertaken a number of initiatives to reduce the environmental impact of our business processes, from office recycling to using waterless urinals in bathrooms. Energy usage is being reduced through lights controlled by motion sensors in toilets, kitchens and meeting rooms.

But there's no question that the area in which we can contribute most to environmental sustainability is with our vehicles. Our TDI diesel engines consume less fuel

and emit less exhaust fumes offering high torque and performance, while our diesel particulate filters extract soot from the exhaust fumes. Numerous engines already fulfill the very stringent Euro 5 norm. Our dual-clutch DSG gearbox provides the comfort of conventional automatic transmission and the dynamic drive of a manual transmission. It has significantly lower fuel consumption in comparison with a conventional automatic transmission with torque conversion. The newest member of our DSG family is the 7 gear DSG transmission for front transverse mounting.

## General Information.

Volkswagen is distributed by Volkswagen Group Australia Pty Ltd, The Lakes Business Park, 6 Lord St, Botany, NSW 2019. ABN 14 093 117 876. Specifications are as planned at January 2011 for model year 2011 and are subject to change without notice or obligation. Cars and accessories are shown for illustrative purposes only and may not depict Australian specifications. Fuel consumption figures according to Australian Design Rules (ADR) 81/02. All Volkswagen approved parts and accessories are warranted for 2 years/unlimited kilometres or new vehicle warranty. All warranties implied by legislation or otherwise are excluded to the maximum extent permitted by law. The liability of Volkswagen shall, subject to the law, be limited at Volkswagen's discretion: 1. In the case of the goods, the repair or the cost of repair, or the replacement or the cost of replacement; and 2. In the case of services, the re-supply of the services or the cost of re-supply of the services. All information in this brochure is correct at time of publication, however variations may occur from time to time and Volkswagen, in so far as it is permitted by law to do so, shall not be liable in any way as a result of any reliance by any person on anything contained in this brochure. The colours shown in the brochure are indicative only and may vary from actual items owing to the printing process. Authorised Volkswagen dealers will provide up-to-date information on model application, design feature, prices and availability on request.

Volkswagen Insurance & Volkswagen Extended Warranty are provided by Allianz Australia Insurance Limited (Allianz), AFS Licence No. 234708, ABN 15 000 122 580. In arranging this insurance, Volkswagen Financial Services Australia Limited, ABN 20 097 071 460 & Volkswagen Group Australia Pty Ltd, ABN 14 093 117 896 and the authorised dealers act as agents of Allianz and not as your agent. Volkswagen Finance is a trading name of Volkswagen Financial Services Australia Limited. Locked Bag 5009, Alexandria NSW 2015. Tel: 02 9695 6311.

# The Caravelle and Multivan

March 2011

Publication: VGACAMU004

[www.volkswagen-commercial.com.au](http://www.volkswagen-commercial.com.au)